

PLUG IN HERE
PLAY @OFFSHORE

Ports of NORMANDY

Caen-Ouistreham // // Cherbourg // // Dieppe

CHERBOURG

DIEPPE

CAEN - OUISTREHAM

Who are we?

Owner of the ports of Caen-Ouistreham,
Cherbourg, Dieppe
A public entity managed by:



RESPONSIVENESS!

What do we do?



Manage and develop
property and assets



Guarantee safe
access for shipping



Define sustainable
development policy



Appoint the
contractors and
operators



A pioneering port for MRE

2014



Cherbourg: creation of a 15t/sqm bearing capacity quay

2015



Cherbourg: 39ha hardstanding area built to anticipate the needs of MRE industry

2021



Caen-Ouistreham: creation of a maintenance facility for the Calvados offshore wind farm

2022



Cherbourg: fitting out an installation hub



Cherbourg: partial strengthening of the heavy load quay to 27&50t/sqm min

Continuously enhancing infrastructure through investment:

120M€

IN THE LAST 10 YEARS

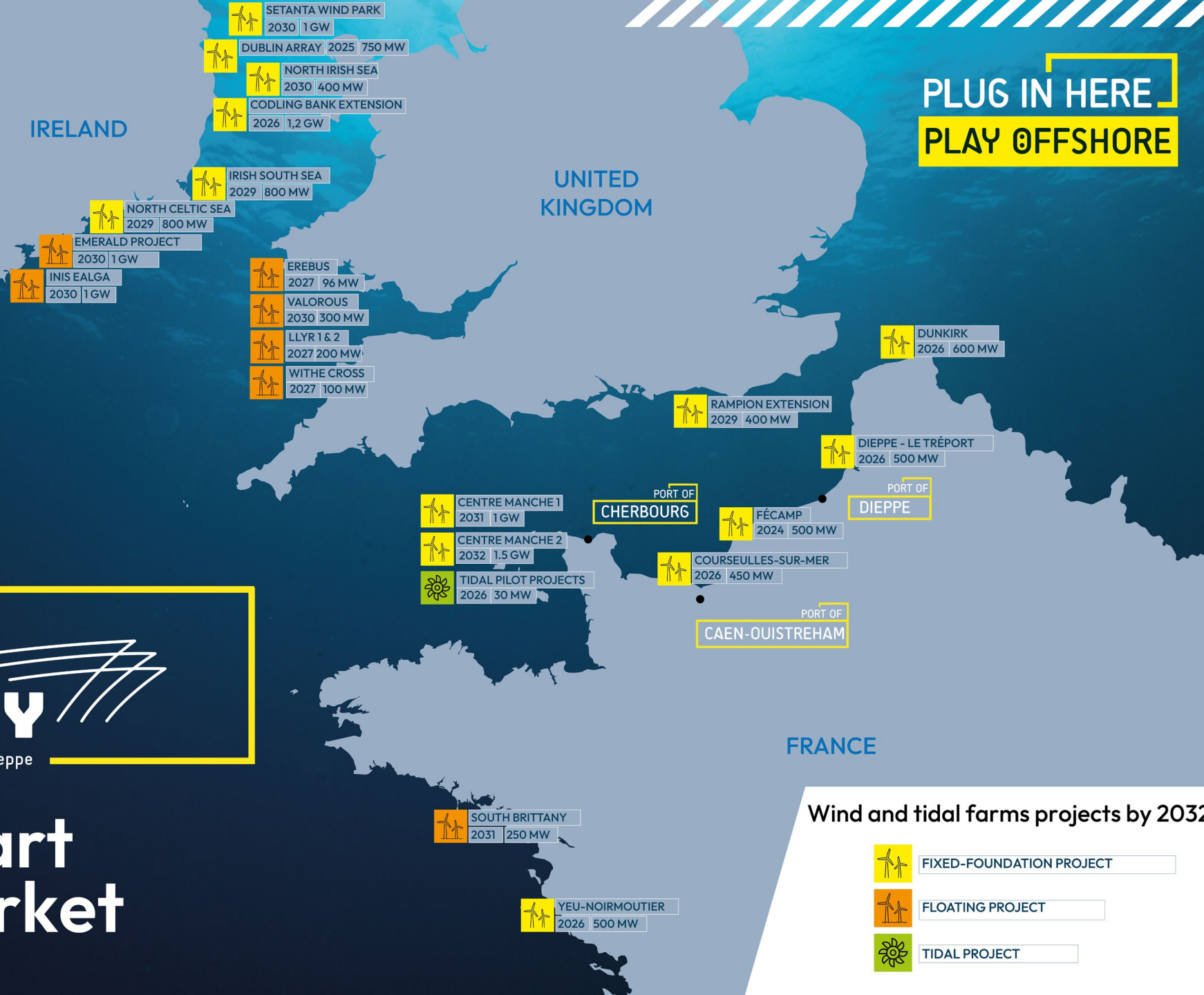
PLUG IN HERE
PLAY OFFSHORE

13 GW Offshore windfarms projects under development on the French, Ireland and United Kingdom coastlines by 2032

Ports of NORMANDY

Caen-Ouistreham // Cherbourg // Dieppe

At the heart of the market



Wind and tidal farms projects by 2032

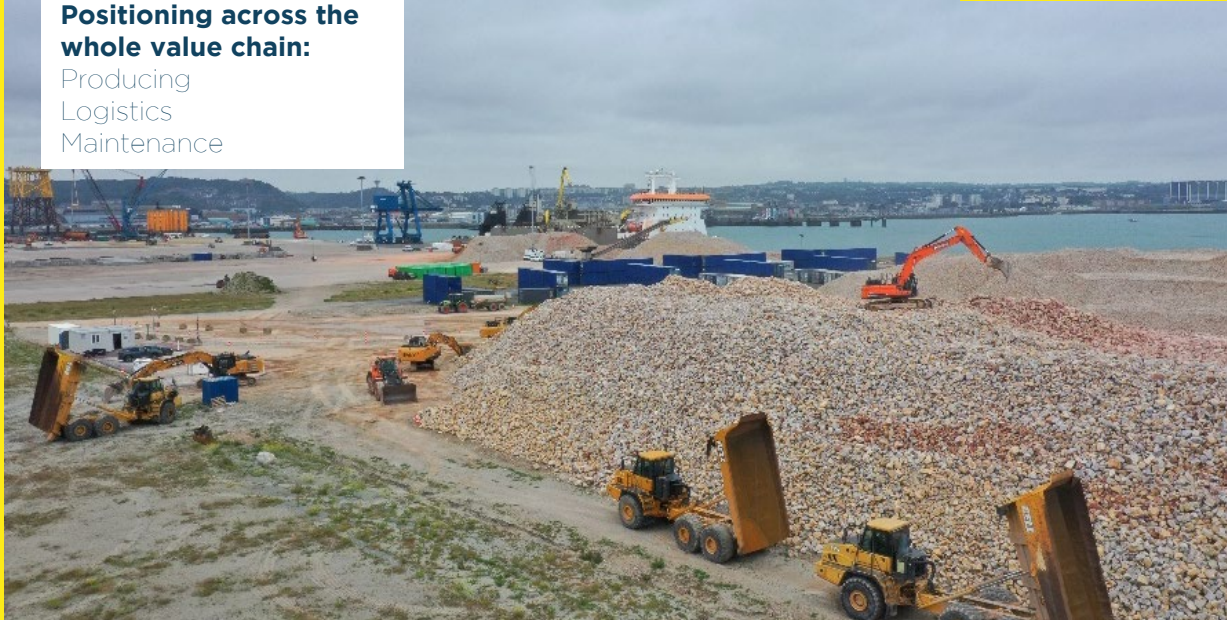
-  FIXED-FOUNDATION PROJECT
-  FLOATING PROJECT
-  TIDAL PROJECT



Multi-technology positioning:
bottom-fixed wind turbines
floating turbines
tidal current turbines

CHERBOURG

Positioning across the whole value chain:
Producing
Logistics
Maintenance



Created for MRE only!



An exceptional harbour
with no constraints



Channel depth: 11.7m min.

Access 24/7

Long and load-bearing docks

Quai des Flamands 1 & 2
360m
Depth 12.5m
Bearing capacity 5t/sqm

Quai des Flamands 3
220m
Depth 14.5m
Bearing capacity 15t/sqm
Reinforced from 27 to
50t/sqm

Quai des Flamands 4
100m
Depth 10m
Bearing capacity
15t/sqm

Quai des Mielles
200m
Depth 5m
Bearing capacity 3t/sqm

900m of conventional & heavy load quays!

Port seabed layout

Berthing pockets: 40m wide
Jacking-up possible along heavy-lift
quay up to 90t/sqm



Wide-open, hard-wearing grounds



80HA lot, very little subsidence

Large surface and underwater storage capacity

**ANCHORAGE FOR 10 WIND
TURBINE FLOATS**
Distance from wharfs: less than 1
nautical mile
Depth: 6m

**MOORING BUOYS FOR
2 WIND
TURBINE FLOATS**
Distance from wharfs: 2
nautical miles
Depth: 21m

**ANCHORAGE FOR 5 WIND
TURBINE FLOATS**
Distance from wharfs:
less than 1 nautical mile
Depth: 12m

Moorings inside & outside the harbour

And now,
how can we contribute
to your success?



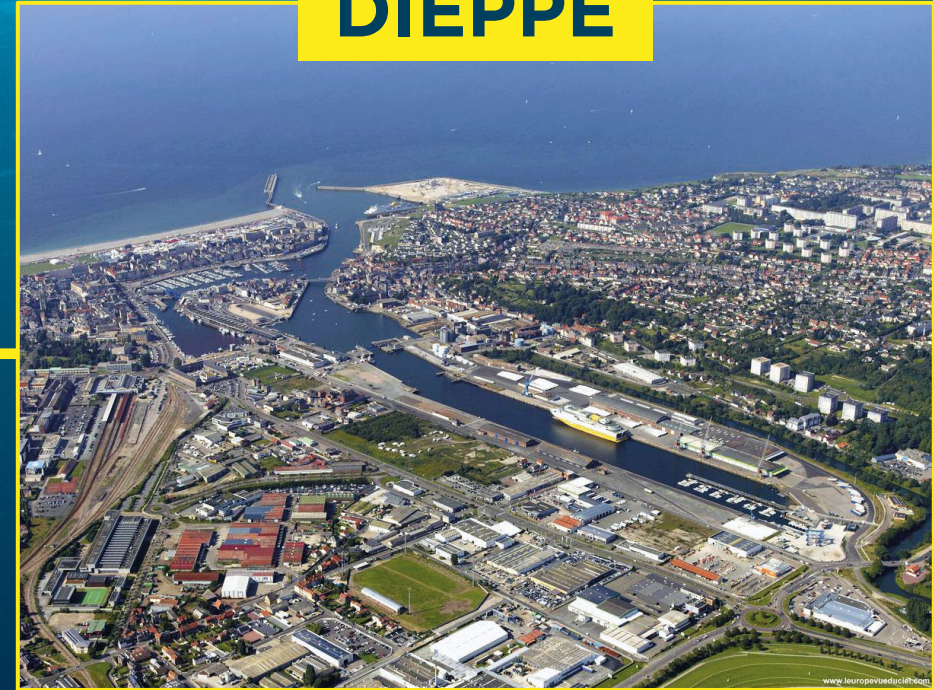
3 integrated ports:

Cherbourg supported by Caen and Dieppe

CAEN - OUISTREHAM



DIEPPE



Easy: 3 ports, 1 contact!

An aerial photograph of an industrial facility, likely a sawmill or wood processing plant, situated along a river. The foreground features several large, dark brown industrial buildings with yellow accents and corrugated metal roofs. To the right, there are large piles of wood chips and debris. In the middle ground, a paved area contains several tall yellow and blue cranes, along with stacks of lumber and other materials. A river flows through the center of the site. In the background, a residential town is visible, followed by green fields and a distant city skyline under a clear blue sky.

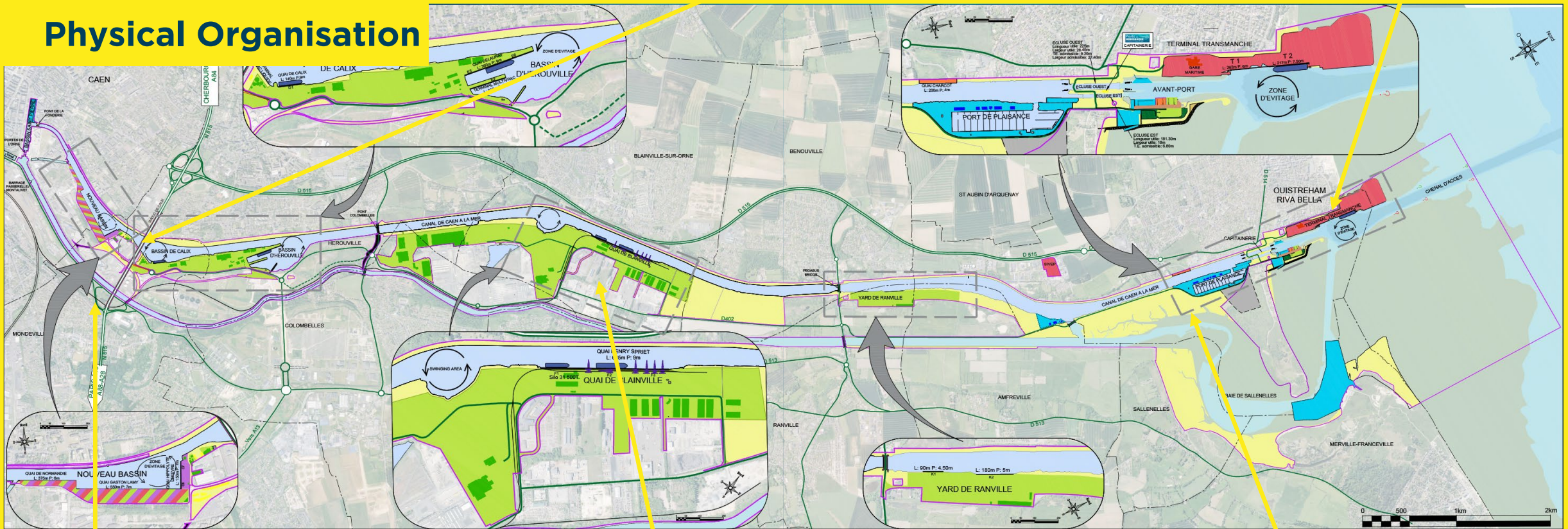
CAEN - OUISTREHAM

Physical organisation

**Calix + H rouville docks:
bulk and breakbulk activities: 10HA**

Ouistreham ferry terminal: 12HA

Physical Organisation



Cruise ship wharf

**Blainville docks:
bulk and breakbulk activities: 25HA**

Marina: 650 berths

Maritime Access

Locks can accommodate vessels up to 26m wide

Locks are open 16/24h on average

Depth in the canal and alongside Blainville & Calix wharfs: 8 to 9m

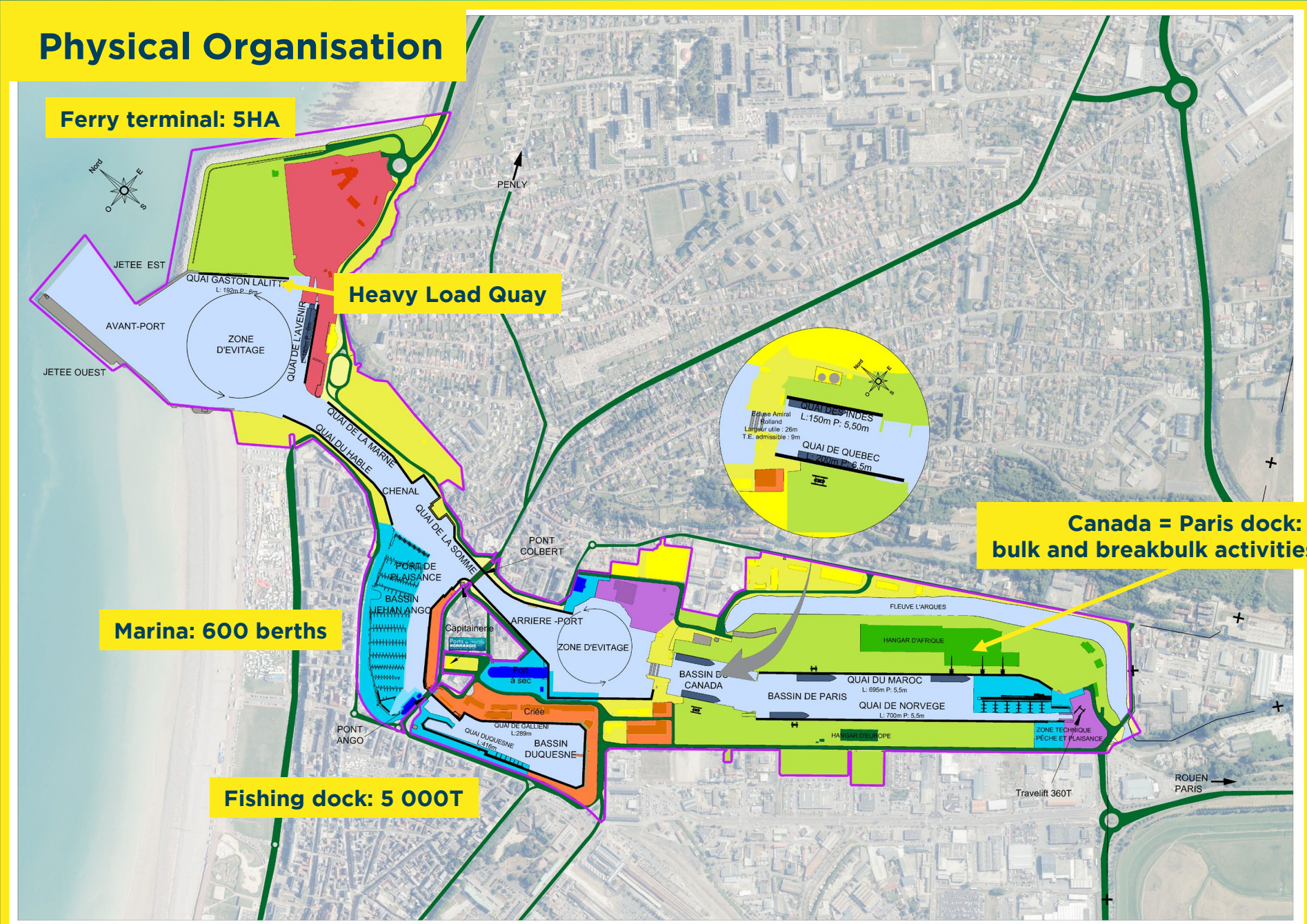
Quays about 60 min. from the locks





DIEPPE

Physical Organisation



Ferry terminal: 5HA

Heavy Load Quay

Marina: 600 berths

Fishing dock: 5 000T

**Canada = Paris dock:
bulk and breakbulk activities: 7HA**

QUAIS INDES
L: 150m P: 5,50m
Longeur utile: 28m
T.E. admissible: 9m

QUAI DE QUEBEC
L: 200m P: 6,5m

Maritime Access

An aerial photograph of a coastal town and harbor. The town is built on a peninsula, with buildings and streets visible. A large body of water, likely a harbor or bay, surrounds the town. A prominent pier or breakwater extends into the water. The water is a deep blue-green color. The sky is clear and blue. A yellow text box is overlaid on the left side of the image, containing information about maritime access.

OUTER PORT

Gaston Lalitte quay: 6m depth min, 120m length

RORO Linkspan: 6m depth min. 6m wide, 135t, can be used outside ferry times

INNER PORT

Locks can accommodate vessels up to 24m wide

Max. vessel length: 145m

Locks open 90 min. before and after high water

Depth in dock: up to 8.5m

Business Environnement



2 major activities in Cherbourg area:
Energy and Steel production
Large quantities of aggregates available near Cherbourg, and Caen-Ouistreham

Already using our services

GE, LMWP blades 2017

Production and storage of Halliade X, one of the world's longest turbine blades

CMN/Hydroquest Paimpol-Bréhat 2019 - 2021

Loading/unloading and storage of a marine turbine and its foundations

Van Oord: Saint-Brieuc 2021-2023

Pin piles marshalling port

Boskalis: Fécamp 2022

Storage of quarry materials, scour protection system

Asso.Subsea Various OWF 2022-2025

Inter Array cable protection

SAIPEM: Courseulles 2022-2025

Seabed Preparation

EDF/SGRE: Fécamp 2023-2024

Assembly hub

DEME: Le Tréport 2024-2025

Pin piles & jackets marshalling port

EDF: Courseulles 2022-2042

Maintenance base

OW: Le Tréport 2025-2045

Maintenance base

Ports of NORMANDY

Caen-Ouistreham // Cherbourg // Dieppe

PLUG IN HERE
PLAY OFFSHORE

<https://portsdenormandie.fr/en/sectors/marine-renewable-energies>